

# POST SUPPORTS

To mount the Timberlab products on, for example, a deck, concrete foundation, tile or roof terrace, there is an extensive choice of post supports. Mounting the Timberlab products on a post support will also have a positive effect on the durability of the products.

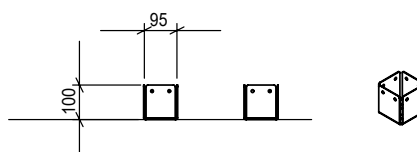
## PH01

Post support 100

Model: EYE 100, PERI 100, TORRE 100 & CONNECT

Material: Stainless steel 316

Weight: 1 kg



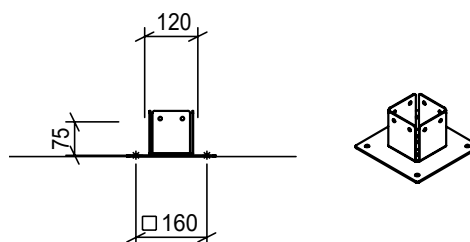
## PH02

Post support 100 with plate

Model: EYE 100, PERI 100, TORRE 100 & CONNECT

Material: Stainless steel 316

Weight: 3 kg



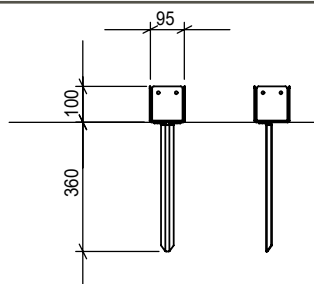
## PH03

Post support 100 with pin

Model: EYE 100, PERI 100, TORRE 100 & CONNECT

Material: Stainless steel 316

Weight: 2 kg

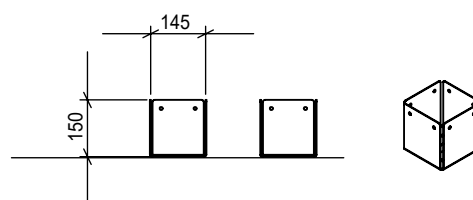




PH03

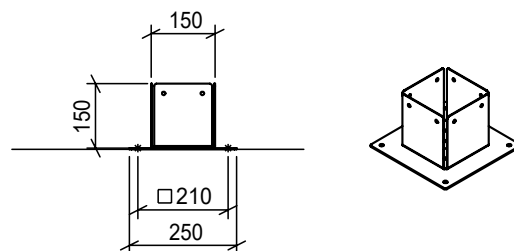
**PH04**

Post support 150  
 Model: EYE 150, EYE SOLAR, PERI 150,  
 TORRE 150, TORRE SOLAR & FARO  
 Material: Stainless steel 316  
 Weight: 2 kg



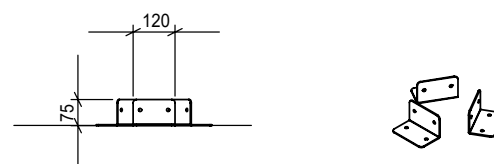
**PH05**

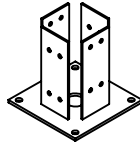
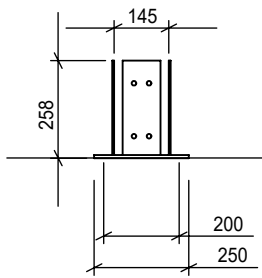
Post support 150 with plate  
 Model: EYE 150, EYE SOLAR, PERI 150,  
 TORRE 150, TORRE SOLAR & FARO  
 Material: Stainless steel 316  
 Weight: 4 kg



**PH06**

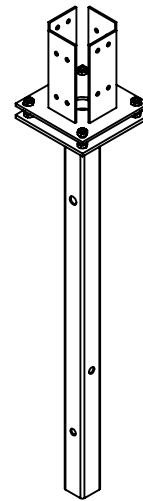
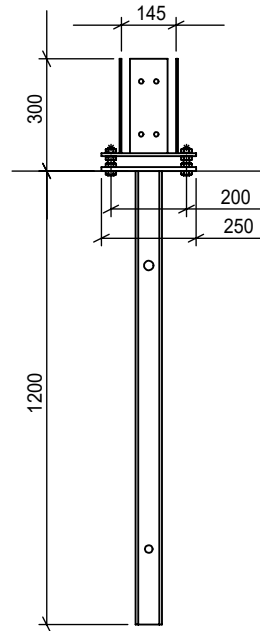
Mounting bracket  
 Model: BOSCO, BOSCO SOLAR, PIATTO, BASSO & SOTTO  
 Material: Stainless steel 316  
 Weight: 2 kg





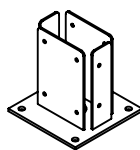
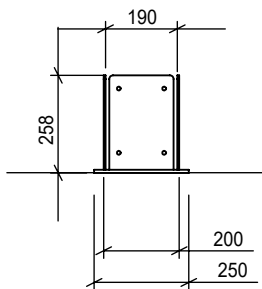
**PH07**

Post support  
 Model: STRATO, STELLE, ANGELO & PILA  
 Material: Galvanized steel  
 Weight: 7 kg



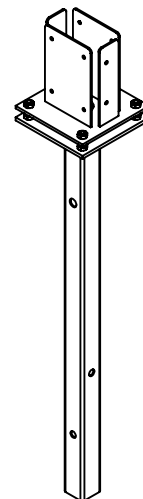
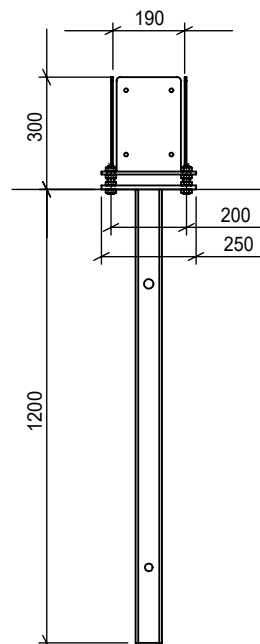
**PH08**

Post support with anchor  
 Model: STRATO, STELLE, ANGELO & PILA  
 Material: Galvanized steel  
 Weight: 20 kg



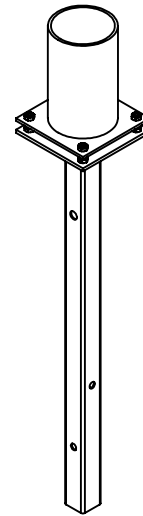
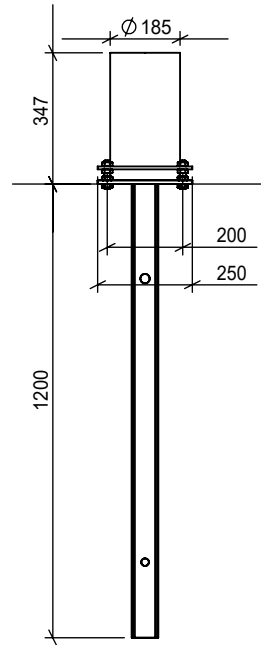
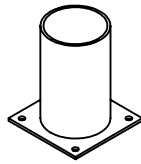
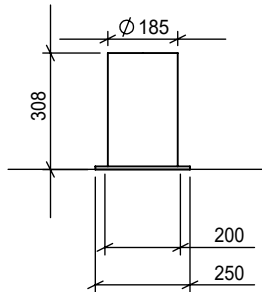
**PH09**

Post support  
 Model: STRADA  
 Material: Stainless steel 316  
 Weight: 7 kg



**PH10**

Post support with anchor  
 Model: STRADA  
 Material: Galvanized steel  
 Weight: 20 kg



**PH11**

Post support round  
 Model: ALTO & GIRO  
 Material: Galvanized steel  
 Weight: 7 kg

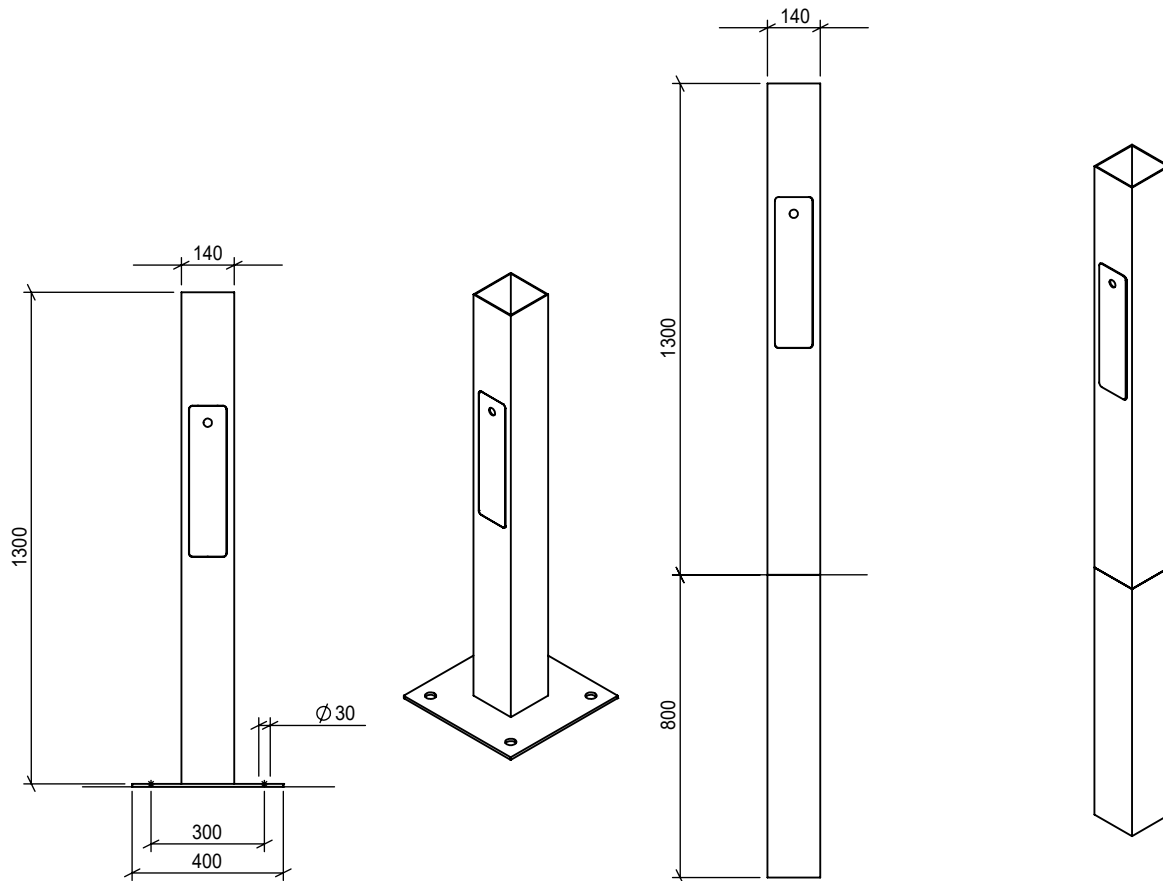
**PH12**

Post support round with anchor  
 Model: ALTO & GIRO  
 Material: Galvanized steel  
 Weight: 20 kg



PH08



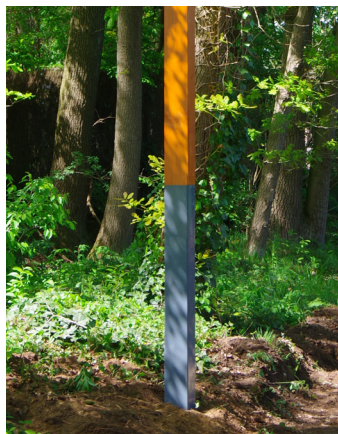


**PH13**

Public lighting support with DIN rail  
 Model: STRATO, STELLE, ANGELO & PILA  
 Material: Steel  
 Finish: Powder coated  
 Weight: 30 kg

**PH14**

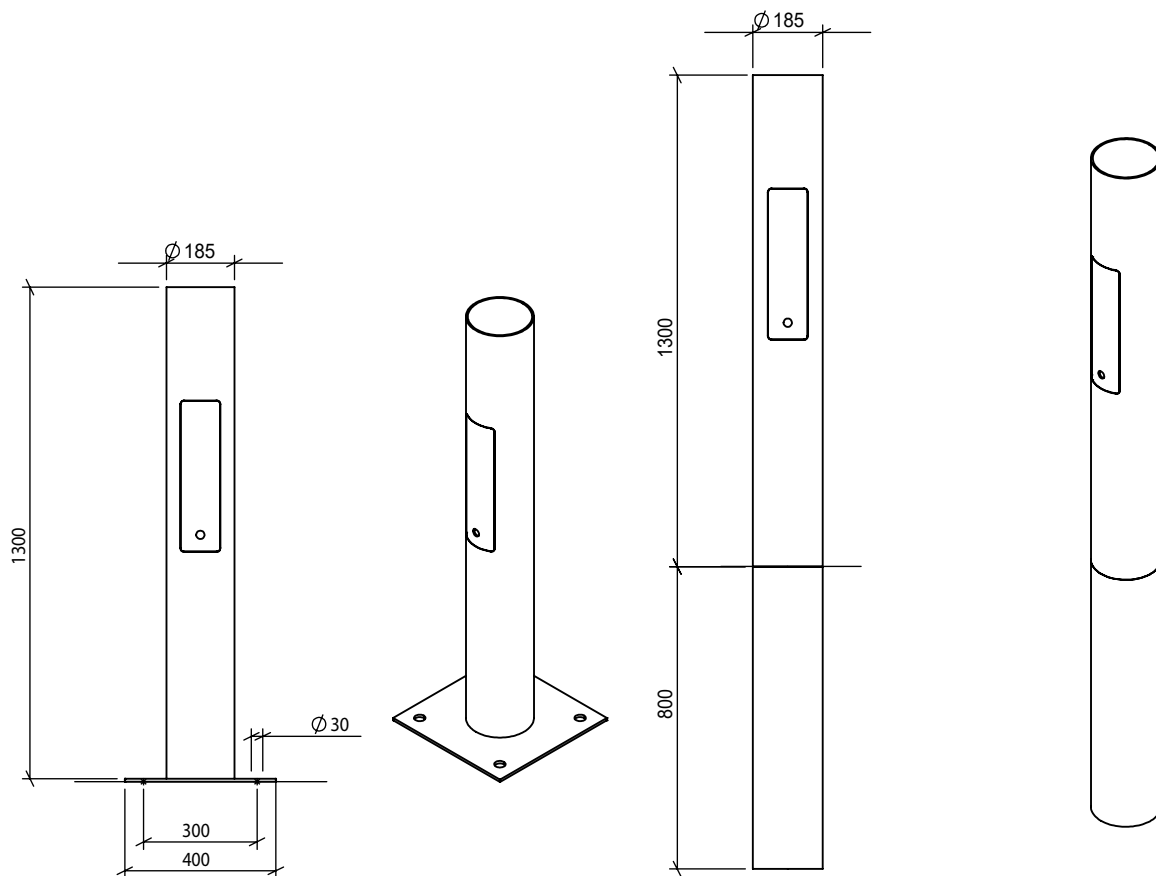
Public lighting support with DIN rail  
 Model: STRATO, STELLE, ANGELO & PILA  
 Material: Steel  
 Finish: Powder coated  
 Weight: 48 kg



PH13/PH14



PH13/PH14



**PH15**

Public lighting support with DIN rail  
 Model: ALTO & GIRO  
 Material: Steel  
 Finish: Powder coated  
 Weight: 30 kg

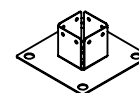
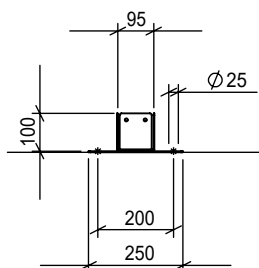
**PH16**

Public lighting support with DIN rail  
 Model: ALTO & GIRO  
 Material: Steel  
 Finish: Powder coated  
 Weight: 48 kg

Post support with bigger plate for the purpose of mounting on a concrete base.

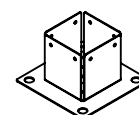
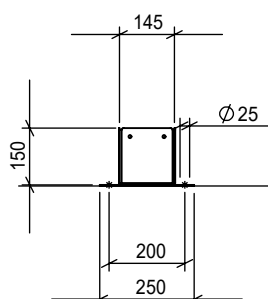
**PH17**

Post support 100 with plate  
 Model: EYE 100, PERI 100 & TORRE 100  
 Material: Stainless steel 316  
 Weight: 3 kg



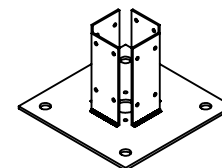
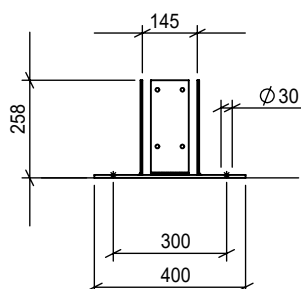
**PH18**

Post support 150 with plate  
 Model: EYE 150, PERI 150, TORRE 150 & FARO.  
 Material: Stainless steel 316  
 Weight: 4 kg



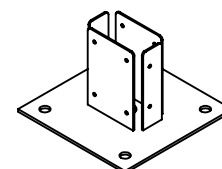
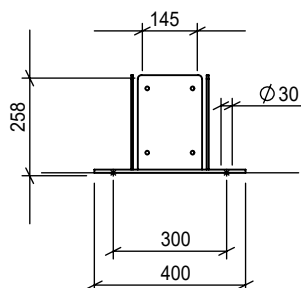
**PH19**

Post support  
 Model: STRATO, STELLE, ANGELO & PILA  
 Material: Stainless steel 316  
 Weight: 7 kg



**PH20**

Post support  
 Model: STRADA  
 Material: Stainless steel 316  
 Weight: 7 kg



**PH21**

Post support round  
 Model: ALTO  
 Material: Stainless steel 316  
 Weight: 7 kg

